



House - Semi-Detached

26 TEAL DRIVE, COSTESSEY, NORWICH, NR8 5FQ

PCM

£1,200

FEATURES

- Quiet Close Location
- Enclosed Rear Garden
- Two Double Bedrooms
- Separate WC
- Two parking Spaces



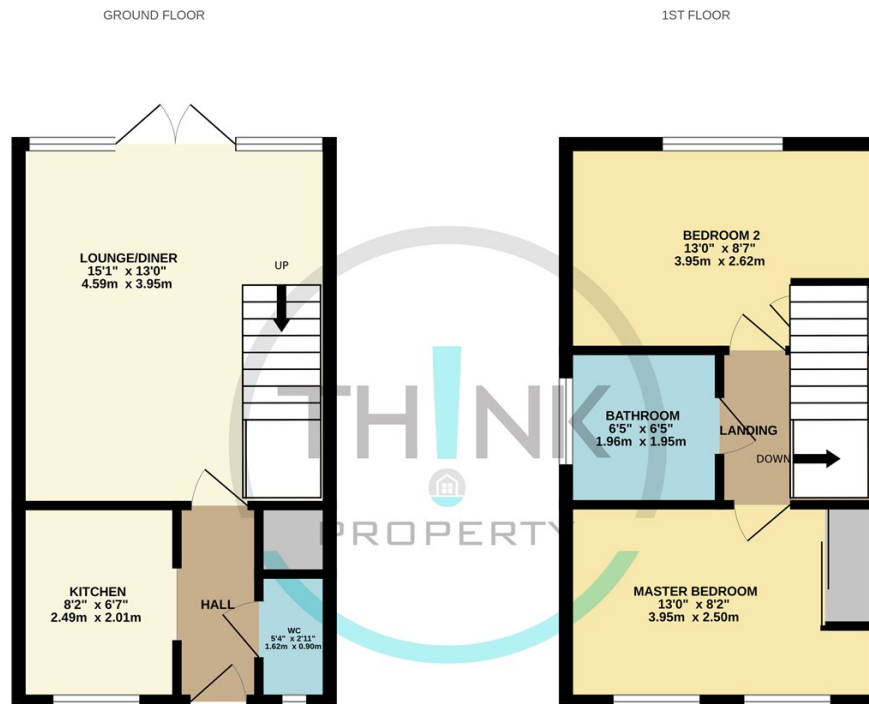
2 Bedroom House - Semi-Detached located in Norwich

This delightful semi-detached house on Teal Drive offers a perfect blend of comfort and convenience. With a well-designed layout, the property features one inviting reception room, ideal for relaxation or entertaining guests.

The house boasts two generously sized bedrooms, providing ample space for rest and personalisation. Each bedroom is designed to maximise natural light, creating a warm and welcoming atmosphere. Additionally, the property includes two bathrooms, ensuring that both residents and visitors have easy access to modern facilities.

The easy maintenance garden is a standout feature, offering a tranquil outdoor space for enjoying the fresh air without the burden of extensive upkeep. This garden is perfect for those who appreciate a bit of greenery but prefer to spend their time enjoying it rather than tending to it.

The location in Costessey provides convenient access to local amenities, schools, and transport links, making it an ideal choice for those looking to settle in a vibrant community.

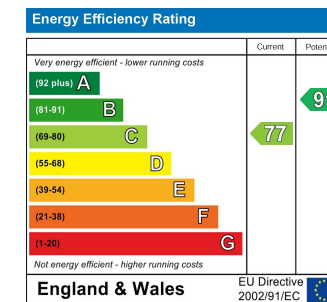


Whilst every attempt has been made to ensure the accuracy of the floorplan contained here, measurements of doors, windows, rooms and any other items are approximate and no responsibility is taken for any error, omission or mis-statement. This plan is for illustrative purposes only and should be used as such by any prospective purchaser. The services, systems and appliances shown have not been tested and no guarantee as to their operability or efficiency can be given.
Made with Metropix ©2023

Call us on
01603 338433

norwich@thinkproperty.ltd
<https://www.thinkproperty.ltd/>

Council Tax Band
B



Agents Note: Whilst every care has been taken to prepare these particulars, they are for guidance purposes only. All measurements are approximate and are for general guidance purposes only and whilst every care has been taken to ensure their accuracy, they should not be relied upon and potential buyers are advised to recheck the measurements.

